



**0001 - Bulbasaur**

"It carries a seed on its back right from birth. As it grows older, the seed also grows larger." Dex...

GRASS POISON

[View details](#) →



**0001 - Bulbasaur - Christmas**

#0001 Bulbasaur - "BULBASAUUR can be seen napping in bright sunlight. There is a seed on it..."

GRASS POISON

[View details](#) →



**0001 - Bulbasaur - Halloween**

Bulbasaur Halloween Ball UPDATE LOG - V2 - 12/12/2026 Redesigned for better print quality...

GRASS POISON

[View details](#) →



**0001 - Bulbasaur - Rose**

The Rose Bulbasaur Ball is another Bulbasaur special design we are happy to bring to...

GRASS POISON

[View details](#) →



**0002 - Ivysaur**

"To support its bulb, Ivysaur's legs grow sturdy. If it spends more time lying in the sunlight, the bu..."

GRASS POISON

[View details](#) →



**0003 - Venusaur** ⚠

"By spreading the broad petals of its flower and catching the sun's rays, it fills its body with..."

GRASS POISON

[View details](#) →



**0004 - Charmander**

"The flame on its tail shows the strength of its life force. If it is weak, the flame also burns weakly..."

FIRE

[View details](#) →



**0005 - Charmeleon**

"Charmeleon mercilessly destroys its foes using its sharp claws. If it encounters a strong foe, it..."

FIRE

[View details](#) →



**0006 - Charizard** ⚠

"A Charizard flies about in search of strong opponents. It breathes intense flames that can..."

FIRE FLYING

[View details](#) →



**0007 - Squirtle**

After birth, its back swells and hardens into a shell. It powerfully sprays foam from its mouth..."

WATER

[View details](#) →



**0008 - Wartortle**

" Its large tail is covered with rich, thick fur that deepens in colour with age. The scratches on it..."

WATER

[View details](#) →



**0009 - Blastoise**

"Once it takes aim at its enemy, it blasts out water with even more force than a fire hose." Dex Ent..."

WATER

[View details](#) →



**0010 - Caterpie**

"It has large, eye-like patterns on its head as protection. They are used to frighten off enemie..."

BUG

[View details](#) →



**0011 - Metapod**

"Its shell is as hard as an iron slab. A Metapod does not move very much because it is prepari..."

BUG

[View details](#) →



**0012 - Butterfree**

"It flits from flower to flower, collecting honey. It can even identify distant flowers in bloom." Dex..."

BUG FLYING

[View details](#) →



**0013 - Weedle**

"Weedle has an extremely acute sense of smell. It is capable of distinguishing its favourite kinds of..."

BUG POISON

[View details](#) →



**0014 - Kakuna**

"It remains virtually immobile while it clings to a tree. However, on the inside, it busily prepares f..."

BUG POISON

[View details](#) →



**0015 - Beedrill**

"Flies at high speeds and attacks with three stingers: one on its rear and one on each of its..."

BUG POISON

[View details](#) →



**0016 - Pidgey**

"When hunting, it skims the surface of the water at high speed to pick off unwary prey such as..."

NORMAL FLYING

[View details](#) →



**0017 - Pidgeotto**

"The claws on its feet are well developed. It can carry prey such as an Exeggcute to its nest ove..."

NORMAL FLYING

[View details](#) →

[View details](#) →



**0018 - Pidgeot**

"When hunting, it skims the surface of the water at high speed to pick off unwary prey such as..."

**NORMAL** **FLYING**

[View details](#) →

[View details](#) →



**0019 - Rattata**

"Living wherever there is food available, it ceaselessly scavenges for edibles the entire da..."

**NORMAL**

[View details](#) →

[View details](#) →



**0020 - Raticate**

"Gnaws on anything with its tough fangs. It can even topple concrete buildings by gnawing on..."

**NORMAL**

[View details](#) →

[View details](#) →



**0021 - Spearow**

"To protect its territory, it flies around ceaselessly, making high-pitched cries." Dex Entry, Pokemo..."

**NORMAL** **FLYING**

[View details](#) →



**0022 - Fearow**

"It has the stamina to fly all day on its broad wings. It fights by using its sharp beak." Dex..."

**NORMAL** **FLYING**

[View details](#) →



**0023 - Ekans**

"Moving silently and stealthily, it eats the eggs of birds, such as Pidgey and Spearow, whole." De..."

**POISON**

[View details](#) →



**0024 - Arbok**

"The pattern on its belly appears to be a frightening face. Weak foes will flee just at the..."

**POISON**

[View details](#) →



**0025 - Pikachu**

"It raises its tail to check its surroundings. The tail is sometimes struck by lightning in this pose." D..."

**ELECTRIC**

[View details](#) →



**0025 - Pikachu - Female**

"This intelligent Pokémon roasts hard berries with electricity to make them tender enough to eat."...

**ELECTRIC**

[View details](#) →



**0026 - Mega Raichu X**

Mega Raichu X is a new Mega Evolution for Raichu introduced in the Pokémon Legends: Z..."

**ELECTRIC**

[View details](#) →



**0026 - Mega Raichu Y**

"Mega Raichu Y's greatest strength is its ability to unleash its power instantaneously, so it excels i..."

**ELECTRIC**

[View details](#) →



**0026 - Raichu**

"When electricity builds up inside its body, it becomes feisty. It also glows in the dark." Dex..."

**ELECTRIC**

[View details](#) →



**0027 - Sandshrew**

"Its body is dry. When it gets cold at night, its hide is said to become coated with a fine dew."...

**GROUND**

[View details](#) →



**0028 - Sandslash**

"Sandslash can roll up its body as if it were a ball covered with large spikes. In battle, it will try to..."

**GROUND**

[View details](#) →

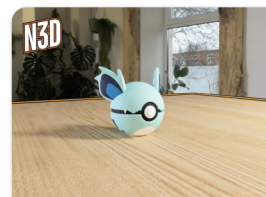


**0029 - Nidoran♀**

"Although small, it should be treated with caution because of its highly toxic thorns. The female h..."

**POISON**

[View details](#) →



**0030 - Nidorina**

"When resting deep in its burrow, its thorns always retract. This is proof that it is relaxed." D..."

**POISON**

[View details](#) →



**0031 - Nidoqueen**

"Its body is covered with needle-like scales. It never shows signs of shrinking from any attack...."

**POISON** **GROUND**

[View details](#) →



**0032 - Nidoran♂**

"The male Nidoran has developed muscles that freely move its ears in any direction. Even the..."

**POISON**

[View details](#) →



**0033 - Nidorino**

"It is easily agitated and uses its horn for offence as soon as it notices an attacker." Dex Entry,..."

**POISON**

[View details](#) →



**0034 - Nidoking**

"When it goes on a rampage, it's impossible to control. But in the presence of a Nidoqueen it's..."

**POISON** **GROUND**

[View details](#) →

[View details](#) →



**0035 - Clefairy**

"Its adorable behaviour and cry make it highly popular. However, this cute Pokémon is rarely..."

FAIRY

[View details](#) →

[View details](#) →



**0036 - Clefable**

"It has an acute sense of hearing. It can easily hear a pin being dropped nearly 1,100 yards..."

FAIRY

[View details](#) →

[View details](#) →



**0037 - Vulpix**

"It can freely control fire, making fiery orbs fly like will-o'-the-wisps. Just before evolution, its six ta..."

FIRE

[View details](#) →

[View details](#) →

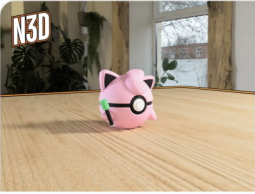


**0038 - Ninetales**

"Legend has it that Ninetales came into being when nine wizards possessing sacred powers..."

FIRE

[View details](#) →



**0039 - Jigglypuff**

"If it inflates to sing a lullaby, it can perform longer and cause sure drowsiness in its audience." De...

NORMAL FAIRY

[View details](#) →



**0040 - Wigglytuff**

"Wigglytuff's body is very flexible. By inhaling deeply, this Pokémon can inflate itself seemingl..."

NORMAL FAIRY

[View details](#) →



**0041 - Zubat**

"Zubat remains quietly unmoving in a dark spot during the bright daylight hours. It does so..."

POISON FLYING

[View details](#) →



**0042 - Golbat**

"Once it bites, it will not stop draining energy from the victim even if it gets too heavy to fly." Dex...

POISON FLYING

[View details](#) →



**0043 - Oddish**

"During the daytime, Oddish buries itself in soil to absorb nutrients from the ground using its entir..."

GRASS POISON

[View details](#) →



**0044 - Gloom**

"From its mouth Gloom drips honey that smells absolutely horrible. Apparently, it loves the horri..."

GRASS POISON

[View details](#) →



**0045 - Vileplume**

"Its petals are the largest in the world. Walking, it scatters extremely allergenic pollen" Dex Entry...

GRASS POISON

[View details](#) →



**0046 - Paras**

"A Paras has parasitic tochukaso mushrooms growing on its back. They grow by drawing..."

BUG GRASS

[View details](#) →



**0047 - Parasect**

"The bug host is controlled by the mushrooms that scatter poisonous spores. The spores are..."

BUG GRASS

[View details](#) →



**0048 - Venonat**

"Its coat of thin, stiff hair that covers its entire body is said to have evolved for protection. Its..."

BUG POISON

[View details](#) →



**0049 - Venomoth**

"Venomoth are nocturnal--they only are active at night. Their favourite prey are insects that gath..."

BUG POISON

[View details](#) →



**0050 - Diglett**

"Its head pokes up approximately eight inches out of the ground. However, its real size remains a..."

GROUND

[View details](#) →



**0051 - Dugtrio**

"Its three heads bob separately up and down to loosen the soil nearby, making it easier for it to..."

GROUND

[View details](#) →



**0052 - Meowth**

It is nocturnal in nature. If it spots something shiny, its eyes glitter brightly." Dex Entry,...

NORMAL

[View details](#) →



**0053 - Persian**

"Has a vicious temperament. Beware if it raises its tail straight up. It is a signal that it is about to..."

NORMAL

[View details](#) →



**0054 - Psyduck**

"While lulling its enemies with its vacant look, this wily Pokémon will use psychokinetic powers..."

WATER

[View details](#) →

[View details](#) →



**0055 - Golduck**

"The webbed flippers on its forelegs and hind legs and the streamlined body of Golduck give it..."

WATER

[View details](#) →

[View details](#) →



**0056 - Mankey**

"When it starts shaking and its nasal breathing turns rough, it's a sure sign of anger. However,..."

FIGHTING

[View details](#) →

[View details](#) →



**0057 - Primeape**

"When it starts shaking and its nasal breathing turns rough, it's a sure sign of anger. However,..."

FIGHTING

[View details](#) →

[View details](#) →



**0058 - Growlithe**

It has a brave and trustworthy nature. It fearlessly stands up to bigger and stronger foes." Dex Ent...

FIRE

[View details](#) →



**0059 - Arcanine**

"Its proud and regal appearance has captured the hearts of people since long ago." Dex Entry,...

FIRE

[View details](#) →



**0060 - Poliwhirl**

"It is possible to see this Pokémon's spiral innards right through its thin skin. However, the..."

WATER

[View details](#) →



**0061 - Poliwhirl**

"Its body surface is always wet and slick with an oily fluid. Because of this greasy covering, it ca..."

WATER

[View details](#) →



**0062 - Poliwhirl**

"This strong and skilled swimmer is even capable of crossing the Pacific Ocean just by kicking...."

WATER FIGHTING

[View details](#) →



**0063 - Abra**

"It senses impending attacks and Teleports away to safety before the actual attacks can strike."...

PSYCHIC

[View details](#) →



**0064 - Kadabra**

"Kadabra emits a peculiar alpha wave if it develops a headache. Only those people with a..."

PSYCHIC

[View details](#) →



**0065 - Alakazam**

"Alakazam's brain continually grows, infinitely multiplying brain cells. This amazing brain gives..."

PSYCHIC

[View details](#) →



**0066 - Machop**

"Machop's muscles are special - they never get sore no matter how much they are used in..."

FIGHTING

[View details](#) →



**0067 - Machoke**

"Machoke undertakes bodybuilding every day even as it helps people with tough, physically..."

FIGHTING

[View details](#) →



**0068 - Machop**

"Machop is known as the Pokémon that has mastered every kind of martial arts. If it grabs..."

FIGHTING

[View details](#) →



**0069 - Bellsprout**

"BELLSPROUT's thin and flexible body lets it bend and sway to avoid any attack, however..."

GRASS POISON

[View details](#) →

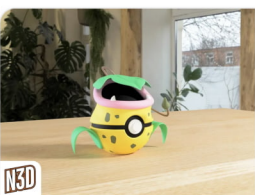


**0070 - Weepinbell**

"WEEPINBELL has a large hook on its rear end. At night, the POKÉMON hooks on to a tree..."

GRASS POISON

[View details](#) →



**0071 - Victreebel**

"VICTREEBEL has a long vine that extends from its head. This vine is waved and flicked about..."

GRASS POISON

[View details](#) →



**0072 - Tentacool**

#0072 Tentacool - "They fire beams from the glassy, magenta orbs that resemble eyes atop..."

WATER POISON

[View details](#) →



**0074 - Geodude**

#0074 Geodude - "When GEODUDE sleeps deeply, it buries itself halfway into the ground. It..."

ROCK GROUND

[View details](#) →



**0077 - Galarian Ponyta**

Galarian Ponyta Version "A PONYTA is very weak at birth. It can barely stand up. Its legs become..."

FIRE

[View details](#) →

[View details](#) →



**0079 - Slowpoke**

"SLOWPOKE uses its tail to catch prey by dipping it in water at the side of a river. However, this...

**WATER** **PSYCHIC**

[View details](#) →

[View details](#) →



**0080 - Slowbro**

#0080 Slowbro - "SLOWBRO's tail has a SHELLDER firmly attached with a bite. As a...

**WATER** **PSYCHIC**

[View details](#) →

[View details](#) →



**0081 - Magnemite**

"The faster the units at its sides rotate, the greater the magnetic force they generate." Dex Entry...

**ELECTRIC** **STEEL**

[View details](#) →

[View details](#) →



**0082 - Magneton**

"Magneton emits a powerful magnetic force that is fatal to mechanical devices. As a result, large...

**ELECTRIC** **STEEL**

[View details](#) →



**0088 - Grimer**

"GRIMER emerged from the sludge that settled on a polluted seabed. This character loves...

**POISON**

[View details](#) →



**0089 - Muk**

"This character's favourite food is anything that is repugnantly filthy. In dirty towns where people...

**POISON**

[View details](#) →



**0090 - Shellder**

"At night, this POKÉMON uses its broad tongue to burrow a hole in the seafloor sand and then sle...

**WATER**

[View details](#) →



**0091 - Cloyster**

"CLOYSTER is capable of swimming in the sea. It does so by swallowing water, then jetting it out...

**WATER** **ICE**

[View details](#) →



**0092 - Gastly**

"When exposed to a strong wind, a Gastly's gaseous body quickly dwindles away. They...

**GHOST** **POISON**

[View details](#) →



**0093 - Haunter**

"If you get the feeling of being watched in darkness when nobody is around, Haunter is...

**GHOST** **POISON**

[View details](#) →



**0094 - Gengar**

"Sometimes, on a dark night, your shadow thrown by a streetlight will suddenly and startlingly...

**GHOST** **POISON**

[View details](#) →



**0095 - Onix**

"It rapidly bores through the ground at 50 mph by squirming and twisting its massive, rugged bod...

**ROCK** **GROUND**

[View details](#) →



**0098 - Krabby**

"Krabby live on beaches, burrowed inside holes dug into the sand. On sandy beaches with little ...

**WATER**

[View details](#) →



**0099 - Kingler**

"KINGLER has an enormous, oversized claw. It waves this huge claw in the air to communicate...

**WATER**

[View details](#) →



**0100 - Voltorb**

"It bears an uncanny and unexplained resemblance to a Poké Ball. Because it explod...

**ELECTRIC**

[View details](#) →



**0101 - Electrode**

"They appear in great numbers at electric power plants. Because they feed on electricity, they...

**ELECTRIC**

[View details](#) →



**0102 - Exeggcute**

"This POKÉMON consists of six eggs that form a closely knit cluster. The six eggs attract each...

**GRASS** **PSYCHIC**

[View details](#) →



**0103 - Exeggutor**

"EXEGGUTOR originally came from the tropics. Its heads steadily grow larger from exposure to...

**GRASS** **PSYCHIC**

[View details](#) →



**0104 - Cubone**

"Cubone pines for the mother it will never see again. Seeing a likeness of its mother in the full...

**GROUND**

[View details](#) →



**0105 - Marowak**

"A Marowak is the evolved form of a Cubone that has grown tough by overcoming the grief of losi...

**GROUND**

[View details](#) →

[View details](#) →



**0109 - Koffing**

"Lighter-than-air gases in its body keep it aloft. The gases not only smell, they are also..."

POISON

[View details](#) →

[View details](#) →



**0110 - Weezing**

"By diluting its toxic gases with a special process, the highest grade of perfume can be extracted. ..."

POISON

[View details](#) →

[View details](#) →



**0113 - Chansey**

"It lays several eggs a day and won't share them with those who have evil in their hearts." Dex...

NORMAL

[View details](#) →

[View details](#) →



**0115 - Kangaskhan**

"If you come across a young KANGASKHAN playing by itself, you must never disturb it or..."

NORMAL

[View details](#) →



**0116 - Horsea**

"HORSEA eats small insects and moss off of rocks. If the ocean current turns fast, this..."

WATER

[View details](#) →



**0117 - Seadra**

"SEADRA generates whirlpools by spinning its body. The whirlpools are strong enough to..."

WATER

[View details](#) →

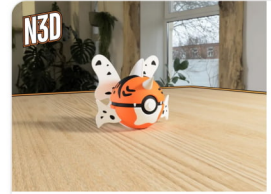


**0118 - Goldeen**

#0118 Goldeen - "GOLDEEN loves swimming wild and free in rivers and ponds. If one of these..."

WATER

[View details](#) →



**0119 - Seaking** ⚠

#0119 Seaking - "SEAKING is very protective of its eggs. The male and female will take turns..."

WATER

[View details](#) →



**0120 - Staryu**

"STARYU apparently communicates with the stars in the night sky by flashing the red core at..."

WATER

[View details](#) →



**0121 - Starmie**

"STARMIE swims through water by spinning its star-shaped body as if it were a propeller on a..."

WATER PSYCHIC

[View details](#) →



**0123 - Scyther**

"Its blindingly fast speed adds to the sharpness of its twin forearm scythes. The scythes can slice..."

BUG FLYING

[View details](#) →



**0125 - Electabuzz**

"When a storm arrives, gangs of this POKÉMON compete with each other to scale heights that a..."

ELECTRIC

[View details](#) →



**0126 - Magmar**

#0126 Magmar - "In battle, MAGMAR blows out intensely hot flames from all over its body to..."

FIRE

[View details](#) →



**0127 - Pinsir**

"It grips prey with its pincers until the prey is torn in half. What it can't tear, it tosses far..."

BUG

[View details](#) →



**0128 - Tauros**

"This POKÉMON is not satisfied unless it is rampaging at all times. If there is no opponent f..."

NORMAL

[View details](#) →



**0129 - Magikarp**

"Its swimming muscles are weak, so it is easily washed away by currents. In places where wat..."

WATER

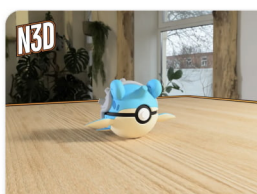
[View details](#) →



**0130 - Gyarados** ⚠

"Rarely seen in the wild. Huge and vicious, it can destroy entire cities in a rage." Dex Entry, Blue

WATER FLYING



**0131 - Lapras**

"It likes swimming around with people on its back. In the Alola region, it's an important means of..."

WATER ICE



**0132 - Ditto**

"It can transform into anything. When it sleeps, it changes into a stone to avoid being attacked."...

NORMAL



**0133 - Eevee**

"A rare Pokémon that adapts to harsh environments by taking on different evolutionar..."

NORMAL

[View details](#) →



**0134 - Vaporeon**

"Vaporeon underwent a spontaneous mutation and grew fins and gills that allow them to live..."

**WATER**

[View details](#) →

[View details](#) →



**0135 - Jolteon**

"JOLTEON's cells generate a low level of electricity. This power is amplified by the static..."

**ELECTRIC**

[View details](#) →

[View details](#) →



**0136 - Flareon**

"When storing thermal energy in its body, its temperature can soar to over 1,600 degrees..."

**FIRE**

[View details](#) →

[View details](#) →



**0137 - Porygon**

"#0137 Porygon - "It has no discernible heartbeat and does not seem to draw breath, and yet it..."

**NORMAL**

[View details](#) →



**0142 - Aerodactyl**

"#0142 Aerodactyl - "AERODACTYL is a character from the age of dinosaurs. It was regenerated..."

**ROCK FLYING**

[View details](#) →



**0143 - Snorlax**

"When its belly is full, it becomes too lethargic even to lift a finger, so it is safe to bounce on its..."

**NORMAL**

[View details](#) →



**0144 - Articuno**

"A legendary bird Pokémon. It freezes water that is contained in winter air and makes it snow." D...

**ICE FLYING**

[View details](#) →



**0145 - Zapdos**

"This legendary bird Pokémon is said to appear when the sky turns dark and lightning showers..."

**ELECTRIC FLYING**

[View details](#) →



**0146 - Moltres**

"One of the legendary bird Pokémon. Those seeing it are overwhelmed by its orange wings..."

**FIRE FLYING**

[View details](#) →



**0147 - Dratini**

"Long thought to be a myth, this Pokémon's existence was only recently confirmed by a..."

**DRAGON**

[View details](#) →



**0148 - Dragonair**

"A mystical Pokémon that exudes a gentle aura. Has the ability to change climate conditions." D...

**DRAGON**

[View details](#) →



**0149 - Dragonite**

"It can circle the globe in just 16 hours. It is a kind hearted Pokémon that leads lost and founderin..."

**DRAGON FLYING**

[View details](#) →



**0150 - Mewtwo**

"A vicious psychic Pokémon created by genetic engineering. Its cold, glowing eyes strike fear in..."

**PSYCHIC**

[View details](#) →



**0151 - Mew**

So rare that it is still said to be a mirage by many experts. Only a few people have seen it..."

**PSYCHIC**

[View details](#) →



**0152 - Chikorita**

"In battle, CHIKORITA waves its leaf around to keep the foe at bay. However, a sweet fragranc..."

**GRASS**

[View details](#) →

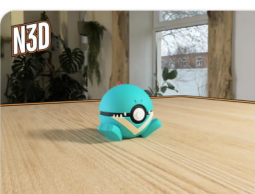


**0155 - Cyndaquil**

"It flares flames from its back to protect itself. The fire burns vigorously if the Pokémon is angry..."

**FIRE**

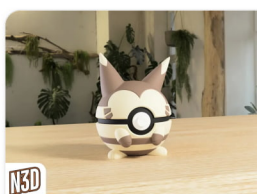
[View details](#) →



**0158 - Totodile**

Despite its small body, Totodile's jaws are very powerful. While it may think it is just playfully..."

**WATER**



**0162 - Furret**

"FURRET has a very slim build. When under attack, it can slickly squirm through narrow..."

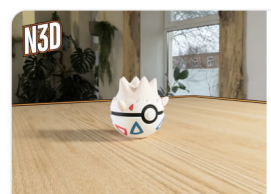
**NORMAL**



**0172 - Pichu**

"When PICHU plays with others, it may short out electricity with another PICHU, creating a show..."

**ELECTRIC**



**0175 - Togepi**

"As its energy, Togepi uses the positive emotions of compassion and pleasure exuded by people..."

**FAIRY**

[View details](#) →



**0194 - Wooper**

"WOOPER usually lives in water. However, it occasionally comes out onto land in search of..."

**WATER** **GROUND**

[View details](#) →

[View details](#) →



**0196 - Espeon**

"It can instantaneously sense its opponent's movements by feeling air currents with its fine..."

**PSYCHIC**

[View details](#) →

[View details](#) →



**0197 - Umbreon**

"On the night of a full moon, or when it gets excited, the ring patterns on its body glow yellow..."

**DARK**

[View details](#) →

[View details](#) →



**0212 - Scizor**

#0212 Scizor - "SCIZOR has a body with the hardness of steel. It is not easily fazed by..."

**BUG** **STEEL**

[View details](#) →



**0228 - Houndour**

#0228 Houndour - "HOUNDOUR hunt as a coordinated pack. They communicate with each..."

**DARK** **FIRE**

[View details](#) →



**0229 - Houndoom**

#0229 Houndoom - "In a HOUNDOOM pack, the one with its horns raked sharply towards the ba..."

**DARK** **FIRE**

[View details](#) →



**0243 - Raikou**

"Raikou embodies the speed of lightning. The roars of this Pokémon send shock waves..."

**ELECTRIC**

[View details](#) →



**0244 - Entei**

"Volcanoes erupt when it barks. Unable to contain its sheer power, it races headlong around the..."

**FIRE**

[View details](#) →



**0245 - Suicune**

"Suicune embodies the compassion of a pure spring of water. It runs across the land with..."

**WATER**

[View details](#) →



**0248 - Tyranitar**

"Its body can't be harmed by any sort of attack, so it is very eager to make challenges against..."

**ROCK** **DARK**

[View details](#) →



**0249 - Lugia**

"Lugia's wings pack devastating power - a light fluttering of its wings can blow apart regular..."

**PSYCHIC** **FLYING**

[View details](#) →



**0250 - Ho Oh**

"Legends claim this Pokémon flies the world's skies continuously on its magnificent seven..."

**FIRE** **FLYING**

[View details](#) →



**0251 - Celebi**

"This Pokémon came from the future by crossing over time. It is thought that so long as Celebi..."

**PSYCHIC** **GRASS**

[View details](#) →



**0257 - Blaziken**

"In battle, BLAZIKEN blows out intense flames from its wrists and attacks foes courageously. T..."

**FIRE** **FIGHTING**

[View details](#) →



**0258 - Mudkip**

#0258 Mudkip - "The fin on MUDKIP's head acts as highly sensitive radar. Using this fin to sense..."

**WATER**

[View details](#) →



**0282 - Gardevoir**

"To protect its Trainer, it will expend all its psychic power to create a small black hole." Dex Entry..."

**PSYCHIC** **FAIRY**

[View details](#) →



**0350 - Milotic**

"MILOTIC live at the bottom of large lakes. When this character's body glows a vivid pink, it..."

**WATER**

[View details](#) →



**0359 - Absol**

"Every time Absol appears before people, it is followed by a disaster such as an earthquake o..."

**DARK**

[View details](#) →



**0373 - Salamence**

"SALAMENCE came about as a result of a strong, long-held dream of growing wings. It is..."

**DRAGON** **FLYING**

[View details](#) →



**0376 - Metagross**

"Metagross has four brains in total. Combined, the four brains can breeze through difficult..."

**STEEL** **PSYCHIC**

[View details](#) →

[View details](#) →



**0380 - Latias**

"LATIAS is highly intelligent and capable of understanding human speech. It is covered wit...

**DRAGON** **PSYCHIC**

[View details](#) →

[View details](#) →



**0381 - Latios**

"LATIOS will open its heart to a TRAINER with a compassionate spirit. This POKÉMON can fly...

**DRAGON** **PSYCHIC**

[View details](#) →

[View details](#) →



**0382 - Kyogre**

It is said to have widened the seas by causing downpours. It had been asleep in a marine...

**WATER**

[View details](#) →

[View details](#) →



**0383 - Groudon**

"Groudon has long been described in mythology as the Pokémon that raised lands and expande...

**GROUND**

[View details](#) →



**0384 - Mega Rayquaza** ⚠

#0384 Rayquaza - "RAYQUAZA is said to have lived for hundreds of millions of years in the...

**DRAGON** **FLYING**

[View details](#) →



**0384 - Rayquaza**

"A Pokémon that flies endlessly in the ozone layer. It is said it would to the ground if Kyogre...

**DRAGON** **FLYING**

[View details](#) →



**0385 - Jirachi**

"It is said to have the ability to grant any wish for just one week every thousand years." Dex Entr...

**STEEL** **PSYCHIC**

[View details](#) →



**0386 - Deoxys**

"The DNA of a space virus underwent a sudden mutation upon exposure to a laser beam and...

**PSYCHIC**

[View details](#) →



**0393 - Piplup**

"Because it is very proud, it hates accepting food from people. Its thick down guards it from cold. ...

**WATER**

[View details](#) →



**0399 - Bidoof**

"Bidoof has an unsophisticated face and is rarely flustered by anything. There have been incident...

**NORMAL**

[View details](#) →



**0405 - Luxray**

#0405 Luxray - "They form packs, each having one male as leader. Legends say that when...

**ELECTRIC**

[View details](#) →

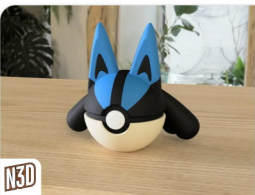


**0445 - Garchomp**

"It flies at the speed of sound while searching for prey, and it has midair battles with Salamence ...

**DRAGON** **GROUND**

[View details](#) →



**0448 - Lucario**

"It readies itself to face its enemies by focusing its mental energies. Its fighting style can be summ...

**FIGHTING** **STEEL**

[View details](#) →



**0470 - Leafeon**

"The younger they are, the more they smell like fresh grass. With age, their fragrance takes on...

**GRASS**

[View details](#) →



**0471 - Glaceon**

"It can control its body temperature at will. This enables it to freeze the moisture in the...

**ICE**

[View details](#) →



**0483 - Dialga**

"It has the power to control time. It appears in Sinnoh-region myths as an ancient deity. " Dex...

**STEEL** **DRAGON**

[View details](#) →



**0484 - Palkia**

"This Pokémon is feared as a deity in Hisuian legend. The birth of Palkia was what caused th...

**WATER** **DRAGON**

[View details](#) →



**0487 - Giratina**

"A Pokémon that is said to live in a world on the reverse side of ours. It appears in an ancient...

**GHOST** **DRAGON**

[View details](#) →



**0491 - Darkrai**

"It can lull people to sleep and make them dream. It is active during nights of the new moon." Dex...

**DARK**

[View details](#) →



**0493 - Arceus**

"According to the legends of Sinnoh, this Pokémon emerged from an egg and shaped all...

**NORMAL**

[View details](#) →

[View details](#) →



**0568 - Trubbish**

" This Pokémon was born from a bag stuffed with trash. Galarian Weezing relish the fumes belch...

POISON

[View details](#) →

[View details](#) →



**0570 - Zorua**

"A once-departed soul, returned to life in Hisui. Derives power from resentment, which rises as...

DARK

[View details](#) →

[View details](#) →



**0571 - Zoroark**

"With its disheveled white fur, it looks like an embodiment of death. Heedless of its own safet...

DARK

[View details](#) →

[View details](#) →



**0609 - Chandelure**

"This character haunts dilapidated mansions. It sways its arms to hypnotize opponents with the...

GHOST FIRE

[View details](#) →



**0644 - Zekrom**

"Mythology tells us that if people lose the righteousness in their hearts, their kingdoms wi...

DRAGON ELECTRIC

[View details](#) →



**0658 - Ash-Greninja**

"It appears and vanishes with a ninja's grace. It toys with its enemies using swift movements,...

WATER DARK

[View details](#) →

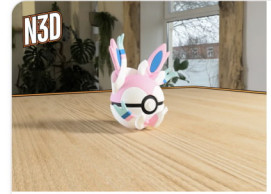


**0658 - Greninja**

"The movement of air against the long tongue Greninja keeps wrapped around its neck allows...

WATER DARK

[View details](#) →



**0700 - Sylveon**

"Sylveon wraps its ribbonlike feelers around its Trainer's arm because this touch enables it to...

FAIRY

[View details](#) →



**0778 - Mimikyu**

"Its actual appearance is unknown. A scholar who saw what was under its rag was overwhelmed ...

GHOST FAIRY

[View details](#) →



**0887 - Dragapult**

"Dragapult can make its whole body transparent by clearing its mind and focusing. Even the...

DRAGON GHOST

[View details](#) →



**0906 Sprigatito**

"Its fluffy fur is similar in composition to plants. This Pokémon frequently washes its face to ke...

GRASS

[View details](#) →



**0937 - Ceruleedge**

"The fiery blades on its arms burn fiercely with the lingering resentment of a sword wielder who l...

FIRE GHOST

[View details](#) →



**0959 - Tinkaton**

#0959 Tinkaton - "The hammer tops 220 pounds, yet it gets swung around easily by Tinkaton as i...

FAIRY STEEL

[View details](#) →



**0006 - Mega Charizard X**

Mega Charizard X – Charizard has three alternate forms: Mega Charizard X, Mega Charizard Y, a...

FIRE DRAGON

[View details](#) →



**0009 - Mega Blastoise**

Mega Blastoise is a powerful Water-type Pokémon that undergoes a massive...

WATER

[View details](#) →



**0094 - Mega Gengar**

Mega Gengar has the ability to access other dimensions and has a vicious nature. Mega...

GHOST POISON

[View details](#) →



**0448 - Mega Lucario**

Mega Lucario Z's powers are said to greatly surpass those of a regular Lucario. It is named ...

FIGHTING STEEL

[View details](#) →



**Beast Ball**

(Japanese: ウルトラボール Ultra Ball ) is a type of Poké Ball introduced in Generation VII. It can...

[View details](#) →



**Captain America**

When Marvel collides with Pokemon.

[View details](#) →



**Cherish Ball**

(Japanese: プレシャスボール Precious Ball ) is a type of Poké Ball introduced in Generation IV ....

[View details](#) →

[View details](#) →



### Clone Ball

A Clone Ball is a type of movie-exclusive item appearing in Pokémon The First Movie - Mewt...

[View details](#) →



### Dark Ball

A Dark Ball (Japanese: ダークボール Dark Ball ) is a Poké Ball variation that was featured in...

[View details](#) →



### Dive Ball

(Japanese: ダイブボール Dive Ball ) is a type of Poké Ball introduced in Generation III. It can be...

[View details](#) →



### Dream Ball

(Japanese: ドリームボール Dream Ball ) is a type of Poké Ball introduced in Generation V . It can...

[View details](#) →



### Dusk Ball

(Japanese: ダークボール Dark Ball ) is a type of Poké Ball introduced in Generation IV . It can b...

[View details](#) →



### Fast Ball

(Japanese: スピードボール Speed Ball ) is a type of Poké Ball introduced in Generation II . It can ...

[View details](#) →



### Feather Ball

The Feather Ball (Japanese: フェザーボール Feather Ball ) is a type of Poké Ball introduced i...

[View details](#) →



### Friend Ball

(Japanese: フレンドボール Friend Ball ) is a type of Poké Ball introduced in Generation II . It can ...

[View details](#) →



### Great Ball

(Japanese: スーパーボール Super Ball ) is a type of Poké Ball introduced in Generation I . It is an...

[View details](#) →



### Great Ball (Hisui)

(Japanese: スーパーボール Super Ball ) is a type of Poké Ball introduced in Pokémon Legends:...

[View details](#) →



### GS Ball

(Japanese: G S ボール GS Ball ) is a Key Item exclusive to Pokémon Crystal . It is a special an...

[View details](#) →



### Heal Ball

(Japanese: ヒールボール Heal Ball ) is a type of Poké Ball introduced in Generation IV . It can b...

[View details](#) →



### Heavy Ball

(Japanese: ヘビーボール Heavy Ball ) is a type of Poké Ball introduced in Generation II . It can be...

[View details](#) →



### Heavy Ball (Hisui)

The Heavy Ball (Japanese: ヘビーボール Heavy Ball ) is a type of Poké Ball introduced in...

[View details](#) →



### Level Ball

(Japanese: レベルボール Level Ball ) is a type of Poké Ball introduced in Generation II . It can be...

[View details](#) →



### Love Ball

(Japanese: ラブラブボール Lovey-Dovey Ball ) is a type of Poké Ball introduced in Generation II ...

[View details](#) →



### Lure Ball

(Japanese: ルアーボール Lure Ball ) is a type of Poké Ball introduced in Generation II . It can be...

[View details](#) →



### Luxury Ball

(Japanese: ゴージャスボール Gorgeous Ball ) is a type of Poké Ball introduced in Generation III ...

[View details](#) →



### Master Ball

(Japanese: マスターボール Master Ball) is a type of Poké Ball introduced in Generation I. It can b...

[View details](#) →



### Park Ball

( Japanese : パークボール, Hepburn : Park Ball ) is a Poké Ball which is only usable within the P...

[View details](#) →



### Poke Ball

( Japanese: モンスターボール Monster Ball ) is a type of Poké Ball introduced in Generation I. It i...

[View details](#) →



### Poke Ball (Hisui)

( Japanese: モンスターボール Monster Ball ) is a type of Poké Ball in Pokémon Legends: Arceus ...

[View details](#) →



### Pokeball - Functional

N3D Functional Pokeball With a print-in-place hinge and clean finish, this will be the only...

[View details](#) →



### Potions

Potion: The most basic healing item, restoring 20 HP to a Pokémon. It's commonly found early in...

[View details](#) →



### Premier Ball

( Japanese: プレミアボール Premier Ball ) is a type of Poké Ball introduced in Generation III . I...

[View details](#) →



### Quick Ball

( Japanese: クイックボール Quick Ball ) is a type of Poké Ball introduced in Generation IV. It can ...

[View details](#) →



### Repeat Ball

( Japanese: リピートボール Repeat Ball ) is a type of Poké Ball introduced in Generation III . I...

[View details](#) →



### Safari Ball



### Sport Ball

(Japanese: コンペボール Competition Ball ), called the Park Ball (Japanese: パークボール...

[View details](#) →



### Strange Ball

(Japanese: ストレンジボール Strange Ball ) is a placeholder Poké Ball introduced in Pokémon...

[View details](#) →



### Team Aqua Ball

Team Aqua was introduced in Stairway to Devon where a member of the team infiltrated the Dev...

[View details](#) →



### Team Flare Ball

Team Flare (Japanese: フレア団 Flare-dan , lit. Flare Gang ) is the villainous team with their...

[View details](#) →



### Team Galactic

Team Galactic (Japanese: ギンガ団 Ginga-dan , literally Galaxy Gang ) is the villainous team wit...

[View details](#) →



### Team Magma Ball

(Japanese: マグマ団のモンスターボール Magma Gang's Monster Ball ) is a Trainer card . It is pa...

[View details](#) →



### Team Rocket Ball

(Japanese: ロケット団のモンスターボール Rocket Gang's Monster Ball ) is a Trainer card ....

[View details](#) →



### Team Rocket - Great Ball

Team Rocket's Great Ball (Japanese: ロケット団のスーパーボール Rocket Gang's Super Ball ) i...

[View details](#) →



### Tera Orb

An orb that holds within it the power to crystallize. When it is charged with energy, it can be used t...

[View details](#) →



### Timer Ball

(Japanese: タイマーボール Timer Ball ) is a type of Poké Ball introduced in Generation III . It can...

[View details](#) →



### Ultra Ball

(Japanese: ハイパーボール Hyper Ball ) is a type of Poké Ball introduced in Generation I . It is an ...

[View details](#) →



### Ultra Ball (Hisui)

(Japanese: ハイパーボール Hyper Ball ) is a type of Poké Ball introduced in Pokémon Legends:...

[View details](#) →



### Unite Ball

Pokémon UNITE BALL, the Unite Ball is the item players use to score points during matches.

[View details](#) →



### Wing Ball

Pokémon WING BALL. An improvement on the original Feather Ball design. A ball that flies fast...

[View details](#) →

You've seen all 282 designs